

L. R. WILLSON & SONS, INC.

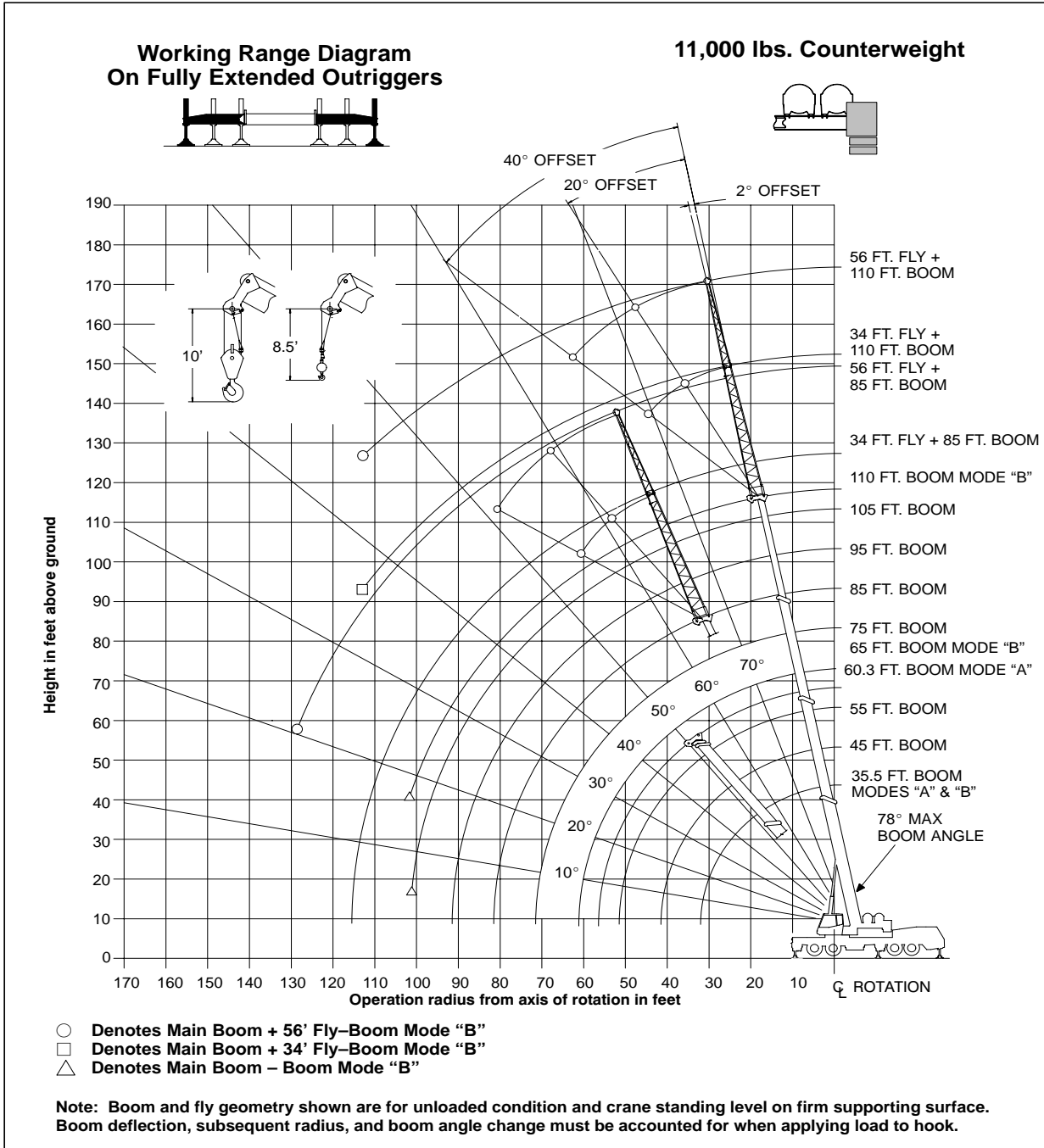
773 ANNAPOLIS ROAD • PO BOX 227

GAMBRILLS, MARYLAND 21054

www.lrwilsonandsons.com



WORKING RANGE DIAGRAM



WARNING

Do Not Lower The Boom Below The Minimum Boom Angle For No Load Stability As Shown In The Lift Charts For The Boom Lengths Given. Loss Of Stability Will Occur Causing A Tipping Condition.



A.I.S.C. Certified Erector



PCI P.C.I. Qualified Erector

L. R. WILLSON & SONS, INC.

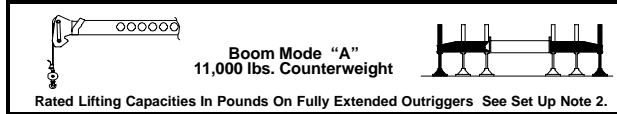
773 ANNAPOLIS ROAD • PO BOX 227

GAMBRILLS, MARYLAND 21054

www.lrwillsონandsons.com

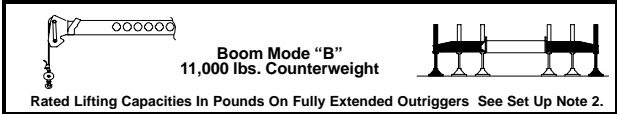


Note: Refer To Page 4 For "Capacity Deductions" Caused By Auxiliary Load Handling Equipment.



Load Radius (ft)	35.5 Ft.			45 Ft.		
	Loaded Boom Angle (Deg.)	360°	Over Rear	Loaded Boom Angle (Deg.)	360°	Over Rear
10	68.5	100,000	100,000	73.5	87,100	87,100
12	65.0	96,700	96,700	71.0	87,100	87,100
15	59.5	82,500	82,500	66.5	82,100	82,100
20	49.5	64,100	64,100	59.5	63,700	63,700
25	37.5	47,300	49,500	51.5	46,500	49,200
30	20.0	32,800	37,100	42.5	32,500	37,000
35				32.0	24,000	28,000
40				15.5	18,200	21,800
Min. Boom Angle/Cap.	0	19,900	19,900	0	13,200	13,200

Load Radius (ft)	55 Ft.			60.3 Ft.		
	Loaded Boom Angle (Deg.)	360°	Over Rear	Loaded Boom Angle (Deg.)	360°	Over Rear
10	77.0	79,500	79,500	76.5	61,300	61,300
12	75.0	72,200	72,200	73.5	57,600	57,600
15	71.5	63,300	63,300	68.5	47,100	47,100
20	66.0	52,100	52,100	63.0	39,500	39,500
25	60.0	44,000	44,000	57.5	31,800	33,900
30	53.5	32,000	36,500	51.5	23,500	27,500
35	46.5	23,700	27,700	45.0	18,000	21,600
40	38.5	18,100	21,800	37.5	14,000	17,300
45	29.0	14,100	17,300	28.5	11,000	13,900
50	14.5	11,000	13,900	15.0	8,600	11,300
55						
Min. Boom Angle/Cap.	0	8,400	8,400	0	6,500	6,500



Load Radius (ft)	35.5 Ft.			45 Ft.			55 Ft.		
	Loaded Boom Angle (Deg.)	360°	Over Rear	Loaded Boom Angle (Deg.)	360°	Over Rear	Loaded Boom Angle (Deg.)	360°	Over Rear
10	68.5	100,000	100,000	73.0	42,000	42,000	76.5	42,000	42,000
12	65.0	96,700	96,700	70.5	42,000	42,000	74.5	42,000	42,000
15	59.5	82,500	82,500	66.5	42,000	42,000	71.5	42,000	42,000
20	49.5	64,100	64,100	59.5	42,000	42,000	66.0	42,000	42,000
25	37.5	47,300	49,500	51.5	42,000	42,000	60.0	42,000	42,000
30	20.0	32,800	37,100	42.5	34,000	38,400	53.5	34,600	38,900
35				32.0	25,500	29,300	46.5	26,000	30,000
40				15.5	19,500	23,000	38.5	20,400	23,900
45							29.0	16,200	19,400
50							14.0	13,000	15,900
Min. Boom Angle/Cap.	0	19,900	19,900	0	14,300	14,300	0	10,200	10,200

Load Radius (ft)	65 Ft.			75 Ft.			85 Ft.		
	Loaded Boom Angle (Deg.)	360°	Over Rear	Loaded Boom Angle (Deg.)	360°	Over Rear	Loaded Boom Angle (Deg.)	360°	Over Rear
12	77.0	42,000	42,000	77.0	42,000	42,000			
15	74.5	42,000	42,000	77.0	42,000	42,000			
20	70.0	42,000	42,000	73.0	42,000	42,000	75.5	35,900	35,900
25	65.5	42,000	42,000	69.0	41,700	41,700	72.0	31,500	31,500
30	60.0	34,900	39,100	65.0	35,100	37,100	68.5	28,100	28,100
35	54.5	26,300	30,300	60.5	26,500	30,400	64.5	25,400	25,400
40	49.0	20,700	24,200	56.0	20,900	24,400	61.0	21,100	23,000
45	42.5	16,600	19,800	51.0	16,800	20,000	56.5	17,000	20,200
50	35.5	13,600	16,400	45.5	13,800	16,700	52.5	13,900	16,800
55	28.5	11,200	13,700	40.0	11,500	14,100	48.0	11,600	14,200
60	13.0	9,100	11,600	33.0	9,600	12,000	43.0	9,700	12,200
65				25.0	7,900	10,200	37.5	8,200	10,400
70				12.5	6,600	8,600	31.5	6,900	8,900
75							23.5	5,700	7,700
80							12.0	4,700	6,500
Min. Boom Angle/Cap.	0	7,400	7,400	0	5,400	5,400	0	3,900	3,900

Load Radius (ft)	95 Ft.			105 Ft.			110 Ft.		
	Loaded Boom Angle (Deg.)	360°	Over Rear	Loaded Boom Angle (Deg.)	360°	Over Rear	Loaded Boom Angle (Deg.)	360°	Over Rear
20	77.5	31,800	31,800						
25	74.5	28,300	28,300	76.0	25,700	25,700	77.0	22,600	22,600
30	71.0	25,300	25,300	73.5	23,100	23,100	74.5	22,100	22,100
35	68.0	22,800	22,800	70.5	20,900	20,900	71.5	20,000	20,000
40	64.5	20,800	20,800	67.5	19,000	19,000	69.0	18,300	18,300
45	61.0	17,100	19,000	64.5	17,200	17,400	66.0	16,700	16,700
50	57.5	14,000	16,900	61.5	14,100	15,900	63.0	14,100	15,200
55	53.5	11,800	14,300	58.0	11,900	14,400	60.0	11,900	13,900
60	49.5	9,900	12,300	54.5	10,000	12,400	57.0	10,000	12,400
65	45.5	8,300	10,600	51.0	8,400	10,700	53.5	8,400	10,700
70	41.0	7,000	9,100	47.5	7,100	9,200	50.0	7,100	9,200
75	35.5	5,900	7,900	43.5	6,000	8,000	46.5	6,100	8,000
80	30.0	4,900	6,800	39.0	5,100	6,900	42.5	5,100	7,000
85	22.5	4,100	5,800	34.0	4,300	6,000	38.0	4,300	6,000
90	11.5	3,300	4,900	28.5	3,500	5,100	33.5	3,600	5,200
95				21.5	2,900	4,400	28.0	2,900	4,500
100				11.0	2,300	3,700	21.5	2,300	3,800
Min. Boom Angle/Cap.	0	2,700	2,700	4.5			17.0		



A.I.S.C. Certified Erector



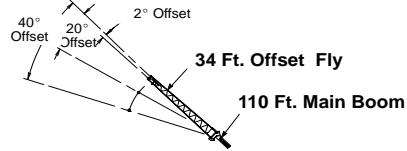
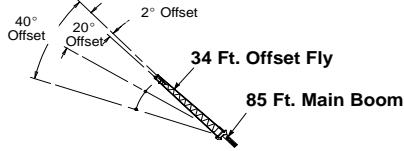
PCI P.C.I. Qualified Erector

L. R. WILLSON & SONS, INC.

773 ANNAPOLIS ROAD • PO BOX 227

GAMBRILLS, MARYLAND 21054

www.lrwilsonandsons.com



Boom Mode "B"
11,000 lbs. Counterweight

Rated Lifting Capacities In Pounds On Fully Extended Outriggers See Set Up Note 2.

Load Radius (ft)	2° Offset		20° Offset		40° Offset	
	Loaded Boom Angle (Deg.)	360°	Loaded Boom Angle (Deg.)	360°	Loaded Boom Angle (Deg.)	360°
25	77.5	18,600				
30	75.0	17,000				
35	73.0	15,600	77.5	11,000		
40	70.5	14,500	75.0	10,500		
45	68.0	13,600	72.5	10,100	77.0	8,200
50	65.0	12,700	70.0	9,600	74.5	7,900
55	62.5	11,900	67.5	9,300	71.5	7,600
60	60.0	11,100	64.5	8,900	69.0	7,400
65	57.0	9,600	62.0	8,600	66.0	7,200
70	54.0	8,300	59.0	8,200	62.5	7,000
75	50.5	7,200	55.5	7,800	59.5	6,800
80	47.0	6,200	52.5	6,800	56.0	6,700
85	43.5	5,400	48.5	5,900	52.0	6,300
90	40.0	4,700	45.0	5,100	48.0	5,600
95	35.5	4,000	40.5	4,400	43.0	4,600
100	31.0	3,400	35.5	3,700		
105	26.0	2,900	30.0	3,100		
110	19.0	2,400	23.0	2,600		
Min. Bm. Ang./Cap.	0	1,700	0	1,800	0	1,900

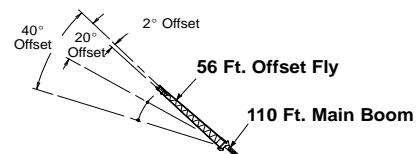
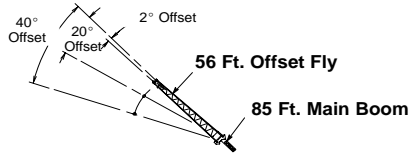
Boom Mode "B"
11,000 lbs. Counterweight

Rated Lifting Capacities In Pounds On Fully Extended Outriggers See Set Up Note 2.

Load Radius (ft)	2° Offset		20° Offset		40° Offset	
	Loaded Boom Angle (Deg.)	360°	Loaded Boom Angle (Deg.)	360°	Loaded Boom Angle (Deg.)	360°
35	76.5	10,500				
40	74.5	10,500				
45	72.5	10,500	77.0	9,500		
50	70.5	9,800	75.0	8,700		
55	68.5	8,900	72.5	8,000	76.5	7,400
60	66.5	8,200	70.5	7,400	74.0	6,900
65	64.0	7,500	68.5	6,800	72.0	6,400
70	62.0	6,900	66.0	6,400	69.5	6,000
75	59.5	6,400	63.5	6,000	67.0	5,600
80	57.0	5,900	61.5	5,600	64.5	5,300
85	54.5	5,100	59.0	5,200	62.0	5,000
90	52.0	4,400	56.5	4,900	59.5	4,700
95	49.0	3,700	53.5	4,200	56.5	4,500
100	46.5	3,200	50.5	3,600	53.5	3,900
105	43.5	2,600	47.5	3,000	50.0	3,300
110	40.0	2,200	44.0	2,500	46.5	2,800
115			40.5	2,100	42.5	2,200
120			37.0	1,700		

WARNING

Do Not Lower 34 Ft. Offset Fly In Working Position Below 36° Main Boom Angle Unless Main Boom Length Is 88 Ft. Or Less, Since Loss Of Stability Will Occur Causing A Tipping Condition.



Boom Mode "B"
11,000 lbs. Counterweight

Rated Lifting Capacities In Pounds On Fully Extended Outriggers See Set Up Note 2.

Load Radius (ft)	2° Offset		20° Offset		40° Offset	
	Loaded Boom Angle (Deg.)	360°	Loaded Boom Angle (Deg.)	360°	Loaded Boom Angle (Deg.)	360°
35	76.5	11,100				
40	74.5	10,500				
45	72.5	9,600				
50	70.0	8,800	77.0	6,200		
55	68.0	8,100	75.0	5,900		
60	66.0	7,600	73.0	5,600		
65	63.5	7,000	70.5	5,300	77.0	4,200
70	61.5	6,600	68.5	5,000	74.5	4,000
75	59.0	6,200	66.0	4,800	72.0	3,900
80	56.5	5,800	63.5	4,600	69.5	3,800
85	54.0	5,500	61.0	4,400	66.5	3,700
90	51.5	5,200	58.5	4,200	64.0	3,600
95	48.5	4,600	55.5	4,000	61.0	3,500
100	45.5	4,000	52.5	3,900	57.5	3,500
105	42.5	3,500	49.5	3,800	54.5	3,400
110	39.0	3,000	46.0	3,500	50.5	3,400
115	35.5	2,600	42.5	3,100	46.5	3,300
120	31.5	2,200	38.0	2,600	41.0	2,800
125	27.5	1,900	33.5	2,200		
130	22.0	1,600	27.5	1,800		

WARNING

Do Not Lower 56 Ft. Offset Fly In Working Position Below 20.5° Main Boom Angle Unless Main Boom Length Is 80 Ft. Or Less, Since Loss Of Stability Will Occur Causing A Tipping Condition.

Boom Mode "B"
11,000 lbs. Counterweight

Rated Lifting Capacities In Pounds On Fully Extended Outriggers See Set Up Note 2.

Load Radius (ft)	2° Offset		20° Offset		40° Offset	
	Loaded Boom Angle (Deg.)	360°	Loaded Boom Angle (Deg.)	360°	Loaded Boom Angle (Deg.)	360°
40	77.0	6,900				
45	75.5	6,900				
50	74.0	6,900				
55	72.5	6,900				
60	70.5	6,400	77.0	5,600		
65	69.0	5,900	75.0	5,200		
70	67.0	5,400	73.0	4,800		
75	65.0	5,000	71.5	4,500	76.5	4,000
80	63.0	4,600	69.5	4,200	74.5	3,800
85	61.0	4,300	67.5	3,900	72.5	3,600
90	59.0	4,000	65.5	3,600	70.5	3,300
95	57.0	3,700	63.0	3,400	68.0	3,100
100	55.0	3,500	61.0	3,200	66.0	3,000
105	53.0	3,100	59.0	3,000	63.5	2,800
110	50.5	2,600	56.5	2,800	61.0	2,600
115	48.0	2,200	54.0	2,700	58.5	2,500
120			51.5	2,400	55.5	2,400
125			48.5	2,000	52.5	2,300
130					49.5	1,900

WARNING

Do Not Lower 56 Ft. Offset Fly In Working Position Below 45.5° Main Boom Angle Unless Main Boom Length Is 80 Ft. Or Less, Since Loss Of Stability Will Occur Causing A Tipping Condition.



A.I.S.C. Certified Erector



PCI P.C.I. Qualified Erector