

L. R. WILLSON & SONS, INC.

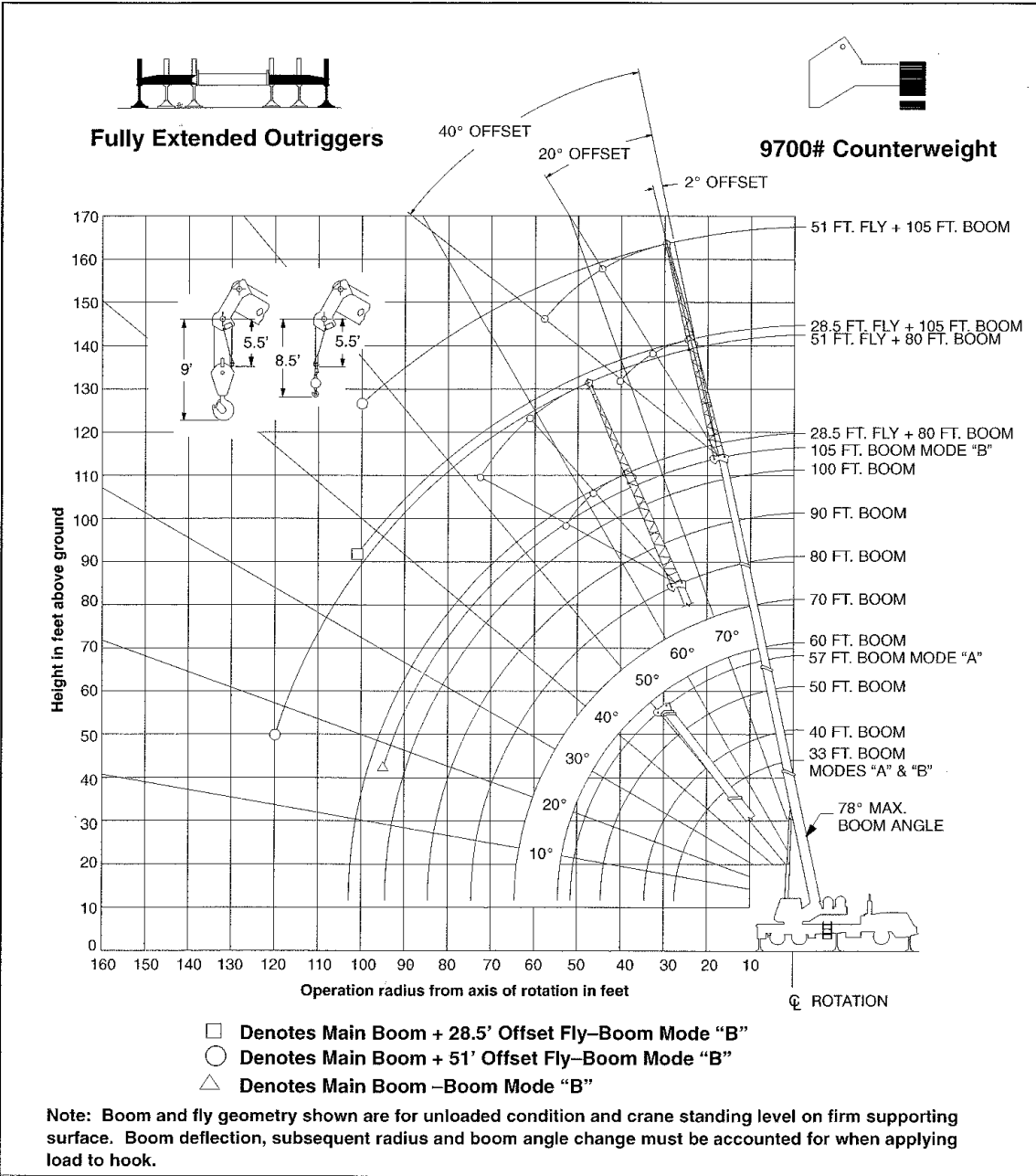
773 ANNAPOLIS ROAD • PO BOX 227

GAMBRILLS, MARYLAND 21054

www.lrwilsonandsons.com



WORKING RANGE DIAGRAM



Note: Boom and fly geometry shown are for unloaded condition and crane standing level on firm supporting surface. Boom deflection, subsequent radius and boom angle change must be accounted for when applying load to hook.

WARNING

Do Not Lower The Boom Below The Minimum Boom Angle For No Load Stability As Shown In The Lift Charts For The Boom Lengths Given. Loss Of Stability Will Occur Causing A Tipping Condition.



A.I.S.C. Certified Erector



PCI P.C.I. Qualified Erector

L. R. WILLSON & SONS, INC.

773 ANNAPOLIS ROAD • PO BOX 227

GAMBRILLS, MARYLAND 21054

www.lrwilsonandsons.com



Rated Lifting Capacities In Pounds Fully Extended Outriggers See Set Up Note 2

9,700 lbs. FULL EXTENSION MAIN BOOM "A"

Load Radius (Ft.)	33 Ft.			40 Ft.		
	∠°	360°	Over Rear	∠°	360°	Over Rear
9	68.0	80,000	80,000			
10	66.0	72,300	72,300	70.5	72,300	72,300
12	62.0	65,500	65,500	67.5	65,200	65,200
15	55.5	55,600	55,600	62.5	55,300	55,300
20	43.5	42,200	42,200	54.0	41,900	41,900
25	26.5	29,900	29,900	44.0	29,700	29,700
30				31.0	21,500	21,500
Min. Bm. Ang./Cap	0 (27.5)	18,400	18,400	0 (34.5)	14,100	14,100
Load Radius (Ft.)	50 Ft.			57 Ft.		
	∠°	360°	Over Rear	∠°	360°	Over Rear
10	75.0	67,500	67,500	77.0	43,800	43,800
12	73.0	61,200	61,200	75.0	43,800	43,800
15	69.0	53,400	53,400	72.0	42,100	42,100
20	62.5	41,600	41,600	66.5	34,300	34,300
25	55.5	29,300	29,300	61.0	28,700	28,700
30	48.0	21,300	21,300	54.5	21,100	21,100
35	39.0	16,100	16,100	47.5	16,000	16,000
40	27.5	12,400	12,400	40.0	12,300	12,300
45				30.5	9,600	9,600
50				16.0	7,600	7,600
Min. Bm. Ang./Cap	0 (44.5)	9,300	9,300	0 (51.5)	6,900	6,900

Note: Refer To Page 5 For "Capacity Deductions For Auxiliary Load Handling Equipment". ∠° Loaded Boom Angle In Degrees. () Reference Radius For Min. Boom Angle Capacities (Shown In Parenthesis) Are In Feet.

Rated Lifting Capacities In Pounds Fully Extended Outriggers See Set Up Note 2

9,700 lbs. FULL EXTENSION MAIN BOOM "B"

Load Radius (Ft.)	33 Ft.			40 Ft.			50 Ft.		
	∠°	360°	Over Rear	∠°	360°	Over Rear	∠°	360°	Over Rear
9	68.0	80,000	80,000						
10	66.0	72,300	72,300	70.5	35,000	35,000	74.5	35,000	35,000
12	62.0	65,500	65,500	67.5	35,000	35,000	72.5	35,000	35,000
15	55.5	55,600	55,600	62.5	35,000	35,000	68.5	35,000	35,000
20	43.5	42,200	42,200	54.0	35,000	35,000	62.5	35,000	35,000
25	26.5	29,900	29,900	43.5	30,700	30,700	55.5	31,100	31,100
30				31.0	22,400	22,400	47.5	23,000	23,000
35							39.0	17,700	17,700
40							27.5	14,000	14,000
Min. Bm. Ang./Cap	0 (27.5)	18,400	18,400	0 (34.5)	13,500	13,500	0 (44.5)	9,200	9,200
Load Radius (Ft.)	60 Ft.			70 Ft.			80 Ft.		
	∠°	360°	Over Rear	∠°	360°	Over Rear	∠°	360°	Over Rear
10	77.5	35,000	35,000						
12	75.5	35,000	35,000						
15	72.5	35,000	35,000	75.5	35,000	35,000			
20	67.5	35,000	35,000	71.5	35,000	35,000	74.5	30,700	30,700
25	62.5	31,400	31,400	67.0	31,500	31,500	71.0	26,400	26,400
30	56.5	23,200	23,200	62.5	23,400	23,400	67.0	22,900	22,900
35	50.5	18,000	18,000	57.5	18,100	18,100	62.5	18,200	18,200
40	43.5	14,300	14,300	52.0	14,500	14,500	58.5	14,600	14,600
45	35.5	11,600	11,600	46.5	11,800	11,800	53.5	11,900	11,900
50	25.0	9,500	9,500	40.0	9,700	9,700	49.0	9,900	9,900
55				33.0	8,100	8,100	43.5	8,200	8,200
60				23.0	6,700	6,700	37.5	6,800	6,900
65							31.0	5,700	5,800
70							22.0	4,700	4,800
Min. Bm. Ang./Cap	0 (54.5)	6,500	6,500	0 (64.5)	4,600	4,600	0 (74.5)	3,300	3,300
Load Radius (Ft.)	90 Ft.			100 Ft.			105 Ft.		
	∠°	360°	Over Rear	∠°	360°	Over Rear	∠°	360°	Over Rear
20	77.0	27,400	27,400						
25	73.5	23,500	23,500	76.0	21,000	21,000	76.5	17,500	17,500
30	70.0	20,500	20,500	73.0	18,700	18,700	74.0	17,500	17,500
35	66.5	18,100	18,100	70.0	16,500	16,500	71.0	15,700	15,700
40	63.0	14,700	14,700	66.5	14,600	14,600	68.0	13,800	13,800
45	59.0	12,000	12,000	63.0	12,000	12,000	65.0	12,100	12,100
50	55.0	9,900	9,900	59.5	10,000	10,000	61.5	10,000	10,000
55	50.5	8,300	8,400	56.0	8,400	8,400	58.5	8,400	8,400
60	46.0	6,900	7,000	52.5	7,000	7,100	55.0	7,000	7,100
65	41.5	5,800	5,900	48.5	5,800	6,000	51.0	5,900	6,000
70	35.5	4,800	4,900	44.0	4,900	5,000	47.0	4,900	5,100
75	29.5	4,000	4,100	39.5	4,100	4,200	43.0	4,100	4,300
80	21.0	3,300	3,400	34.0	3,400	3,500	38.5	3,400	3,600
85				28.0	2,800	2,900	33.5	2,800	3,000
90				20.0	2,200	2,400	27.5	2,200	2,400
95							19.5	1,800	2,000
Min. Bm. Ang./Cap	0 (84.5)	2,300	2,300	0 (94.5)	1,500	1,500	17.0 (96.3)		

Note: Refer To Page 5 For "Capacity Deductions For Auxiliary Load Handling Equipment". ∠° Loaded Boom Angle In Degrees. () Reference Radius For Min. Boom Angle Capacities (Shown In Parenthesis) Are In Feet.



A.I.S.C. Certified Erector



PCI P.C.I. Qualified Erector

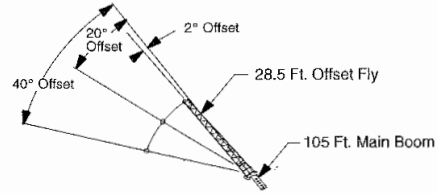
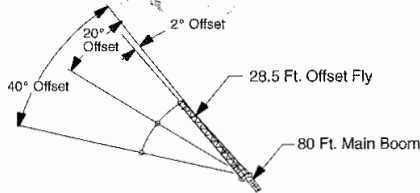
L. R. WILLSON & SONS, INC.

773 ANNAPOLIS ROAD • PO BOX 227

GAMBRILLS, MARYLAND 21054

www.lrwillsionandsons.com

Link-Belt
CONSTRUCTION EQUIPMENT



Rated Lifting Capacities In Pounds Fully Extended Outriggers See Set Up Note 2

FULL EXTENSION 9,700 lbs.

Load Radius (Ft.)	2° Offset		20° Offset		40° Offset	
	∠°	360°	∠°	360°	∠°	360°
25	77.0	15,200				
30	74.5	13,900				
35	72.0	11,900				
40	69.0	11,000				
45	66.0	10,300				
50	63.0	9,600				
55	60.0	8,900				
60	57.0	7,900				
65	53.5	6,700				
70	49.5	5,800				
75	45.5	4,900				
80	41.5	4,200				
85	37.0	3,600				
90	31.5	3,000				
95	25.5	2,500				
100	16.5	2,100				
Min. Bm. Ang./Cap.	0	1,300	0	1,400	0	1,500

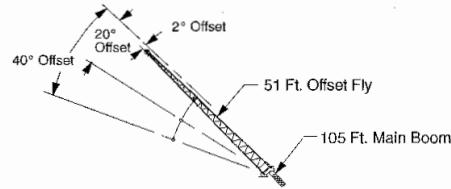
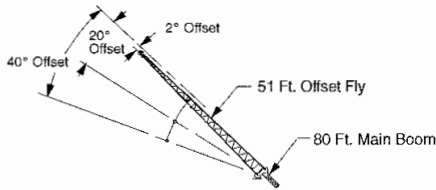
Rated Lifting Capacities In Pounds Fully Extended Outriggers See Set Up Note 2

FULL EXTENSION 9,700 lbs.

Load Radius (Ft.)	2° Offset		20° Offset		40° Offset	
	∠°	360°	∠°	360°	∠°	360°
35	76.5	9,000				
40	74.5	9,000	78.0°	7,900		
45	72.5	8,800	76.0	7,500		
50	70.0	7,900	73.5	7,200	76.5	5,700
55	67.5	7,200	71.0	6,600	74.0	5,500
60	65.5	6,600	69.0	6,100	71.5	5,400
65	63.0	6,100	66.5	5,700	69.5	5,200
70	60.5	5,500	64.0	5,300	66.5	5,000
75	57.5	4,700	61.0	4,900	64.0	4,700
80	54.5	4,000	58.5	4,400	61.0	4,400
85	51.5	3,300	55.0	3,700	58.0	4,000
90	48.5	2,800	52.0	3,100	54.5	3,300
95	45.0	2,300	48.5	2,600	51.0	2,800
100	41.5	1,900	45.0	2,100	47.0	2,300
105	38.0	1,500	41.0	1,700	42.5	1,800

WARNING

Do Not Lower 28.5 Ft. Offset Fly In Working Position Below 37° Main Boom Angle Unless Main Boom Length Is 86 Ft. Or Less, Since Loss Of Stability Will Occur Causing A Tipping Condition.



Rated Lifting Capacities In Pounds Fully Extended Outriggers See Set Up Note 2

FULL EXTENSION 9,700 lbs.

Load Radius (Ft.)	2° Offset		20° Offset		40° Offset	
	∠°	360°	∠°	360°	∠°	360°
35	76.0	7,400				
40	74.0	6,700				
45	71.5	6,100	78.0°	4,200		
50	69.5	5,600	76.0	3,900		
55	67.0	5,100	73.5	3,700		
60	64.5	4,700	71.0	3,500	77.0	2,700
65	62.0	4,300	68.5	3,300	74.5	2,600
70	59.5	4,000	66.0	3,100	72.0	2,500
75	57.0	3,800	63.0	2,900	69.0	2,400
80	54.0	3,500	60.5	2,800	66.0	2,300
85	51.0	3,300	57.5	2,700	62.5	2,300
90	48.0	3,100	54.5	2,600	59.5	2,200
95	45.0	2,900	51.0	2,500	55.5	2,200
100	41.5	2,700	47.5	2,400	51.5	2,200
105	37.5	2,300	43.5	2,300	47.0	2,100
110	33.0	2,000	39.0	2,200	41.5	2,100
115	28.0	1,600	33.5	1,800		
120	22.0	1,400	26.5	1,500		

Rated Lifting Capacities In Pounds Fully Extended Outriggers See Set Up Note 2

FULL EXTENSION 9,700 lbs.

Load Radius (Ft.)	2° Offset		20° Offset		40° Offset	
	∠°	360°	∠°	360°	∠°	360°
40	77.5	5,800				
45	75.5	5,700				
50	74.0	5,400				
55	72.0	5,100	77.5	3,700		
60	70.5	4,800	75.5	3,500		
65	68.5	4,500	73.5	3,400		
70	66.5	4,200	71.5	3,200	76.5	2,500
75	64.5	3,900	69.5	3,100	74.5	2,400
80	62.0	3,600	67.5	2,900	72.5	2,400
85	60.0	3,300	65.5	2,800	70.5	2,300
90	58.0	3,000	63.5	2,700	68.0	2,300
95	55.5	2,900	61.0	2,600	65.5	2,200
100	53.0	2,300	58.5	2,500	63.0	2,200
105	50.0	1,900	56.0	2,300	60.5	2,200
110			53.5	2,000	57.5	2,100
115			50.5	1,600	54.5	1,900
120					51.0	1,500

WARNING

Do Not Lower 51 Ft. Offset Fly In Working Position Below 47.5° Main Boom Angle Unless Main Boom Length Is 78 Ft. Or Less, Since Loss Of Stability Will Occur Causing A Tipping Condition.

WARNING
Do Not Lower 51 Ft. Offset Fly In Working Position Below 17° Main Boom Angle Unless Main Boom Length Is 78 Ft. Or Less, Since Loss Of Stability Will Occur Causing A Tipping Condition.

Note: Refer To Page 5 For "Capacity Deductions For Auxiliary Load Handling Equipment". ∠° Loaded Boom Angle In Degrees. * This Capacity Based On Maximum Obtainable Boom Angle.

Note: Refer To Page 5 For "Capacity Deductions For Auxiliary Load Handling Equipment". ∠° Loaded Boom Angle In Degrees. * This Capacity Based On Maximum Obtainable Boom Angle.



A.I.S.C. Certified Erector



PCI P.C.I. Qualified Erector